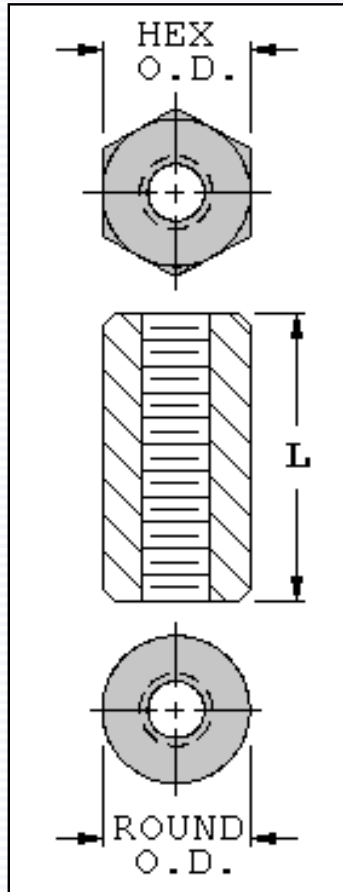


Hex & Round Standoffs

6-32 Threads - .250 [6,35] O.D. - Brass • Aluminum • Stainless Steel



6-32 Threaded Standoffs - .250 [6,35] O.D.

Length "L" Inch [mm]	O.D. Inch [mm]	Aluminum Clear Iridite		Brass Zinc Plate		Stainless Steel
		Cat. No.		Cat. No.		Cat. No.
		Hex	Round	Hex	Round	Hex
.250 [6,35]	.250 [6,35]	2208	3485	1451A	1548A	1922
.375 [9,53]	.250 [6,35]	2209	3486	1451B	1548B	1922A
.500 [12,70]	.250 [6,35]	2210	3487	1451C	1548C	1922B
.625 [15,87]	.250 [6,35]	1813	1847	1451D	1548D	—
.750 [19,05]	.250 [6,35]	2211	3488	1451E	1548E	1922C
.875 [22,23]	.250 [6,35]	1816	1848	1833	1879	—
1.000 [25,40]	.250 [6,35]	2212	3489	1635	1548F	1922D
1.250 [31,75]	.250 [6,35]	1818	1853	1636	1881	—
1.500 [38,10]	.250 [6,35]	2213	3490	1637	1882	1922E
1.750 [44,45]	.250 [6,35]	1819	1855	1638	1883	—
2.000 [50,80]	.250 [6,35]	2214	3491	1639	1884	1922F

2.250 [57,15]	.250 [6,35]	1820	1856	1642	1885	—
2.500 [63,50]	.250 [6,35]	1825	1857	1643	1886	—
Standoffs over 1.000 [25,40] long are tapped .375 [9.63] each end. Standoff sizes not shown are available on special order.						

[Click to Request Samples](#)

